

# DIY Instruction

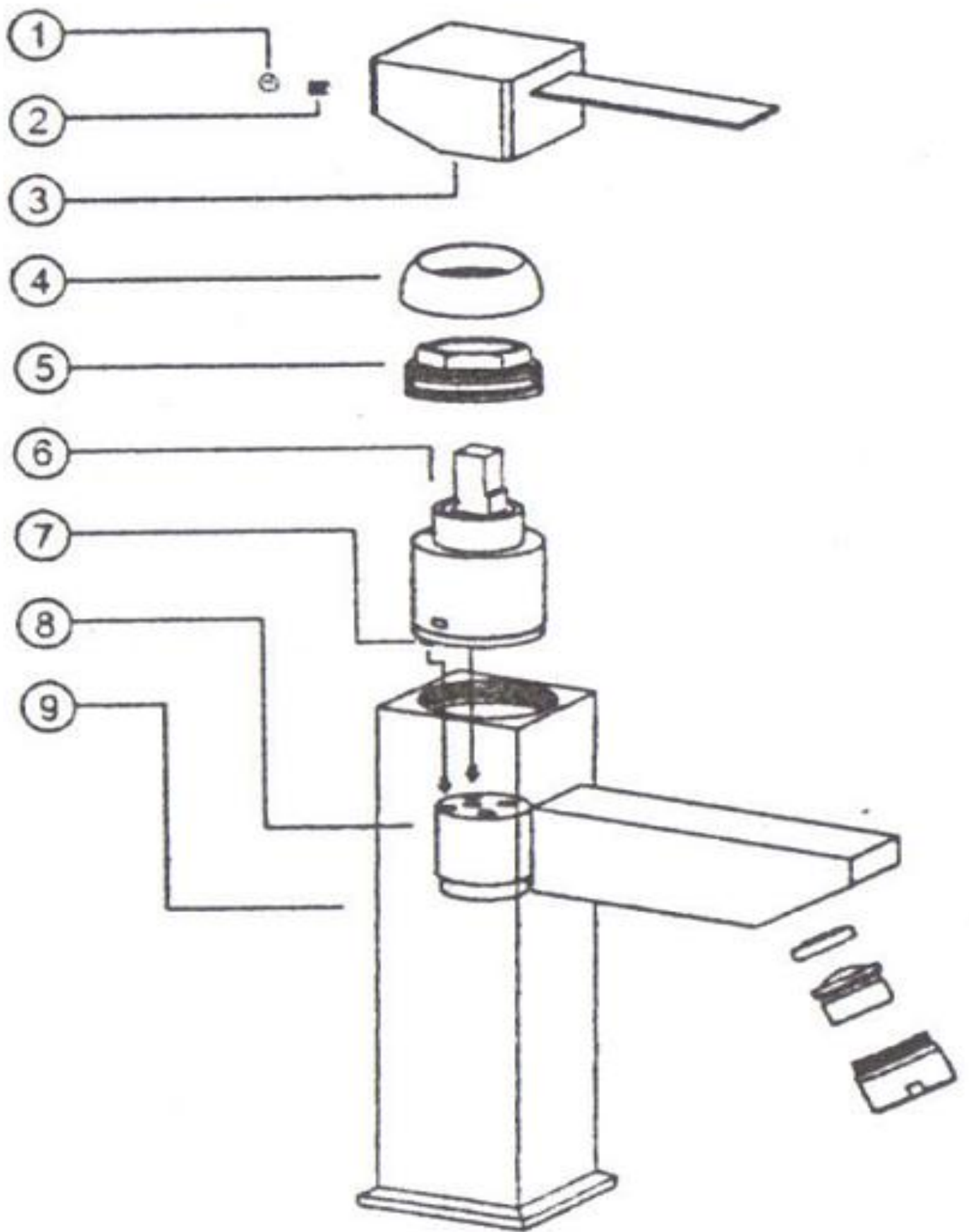
- 1 - Remove chrome cap from mixer handle .
- 2 - Use 2.5mm allen key to back off the screw holding the handle .
- 3 - remove the handle .
- 4 - Remove cap .
- 5 - Remove nut holding the cartridge .
- 6 - Lift out the cartridge and mark faulty .
- 7 - Put the new cartridge into the mixer .

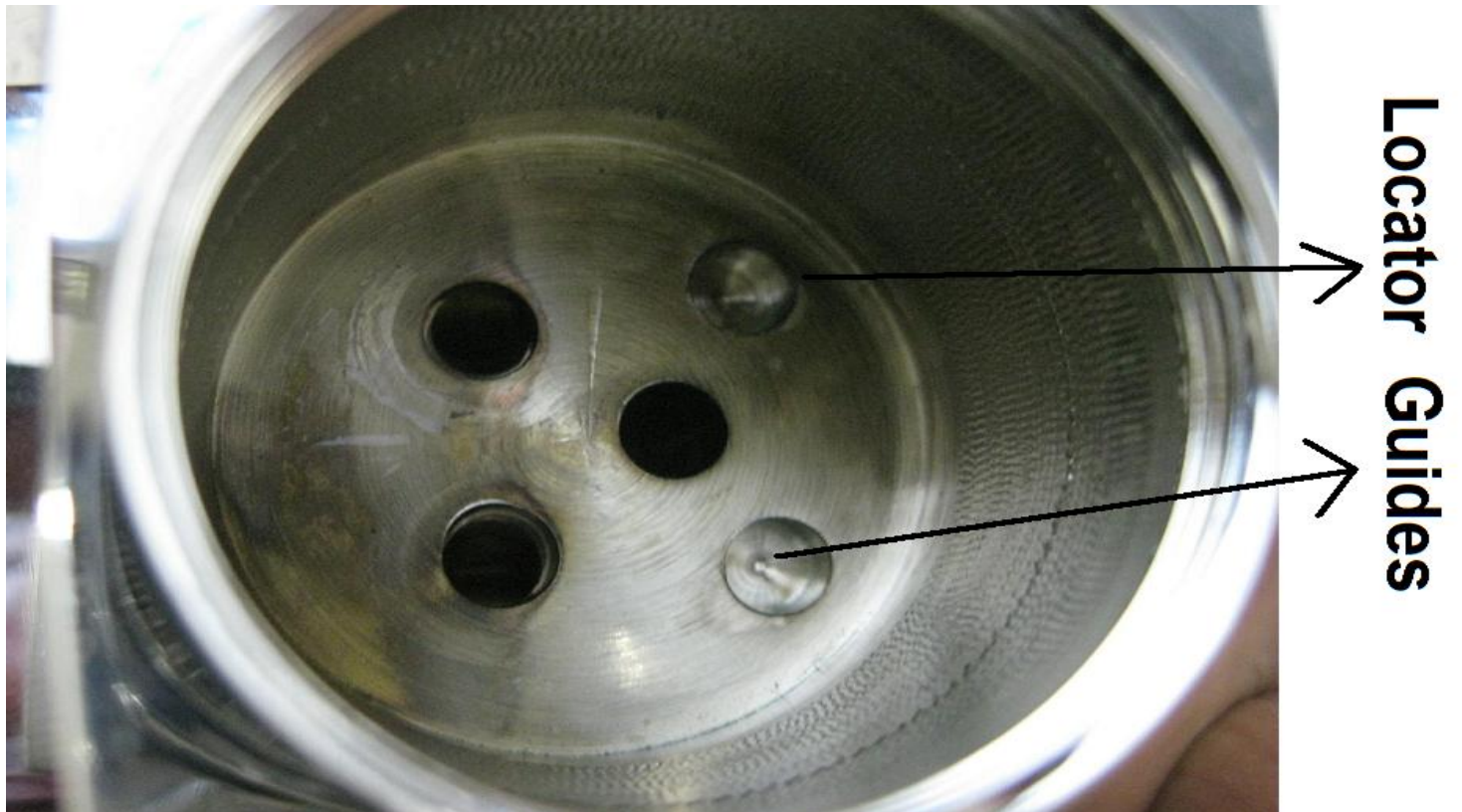
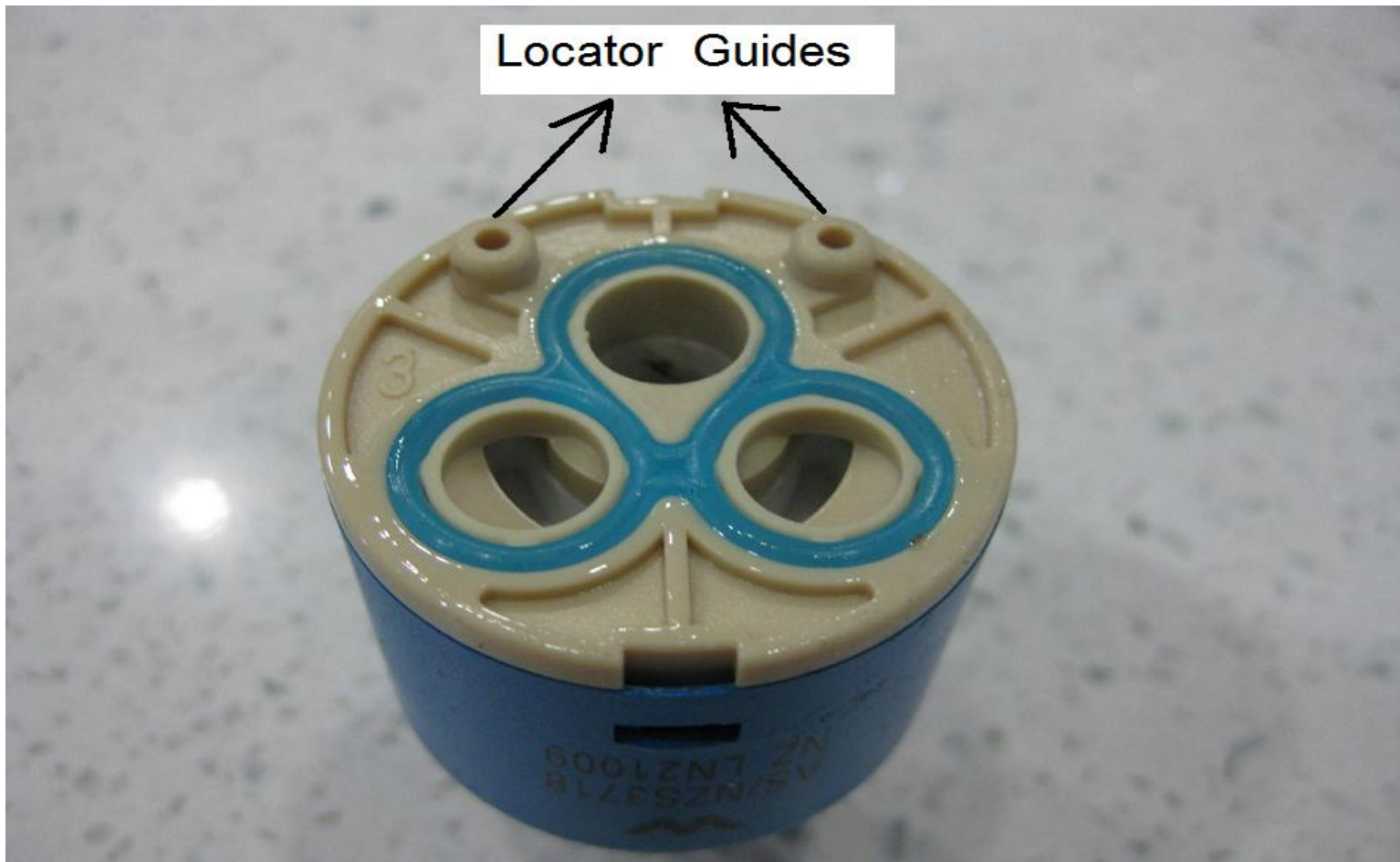
- **Ensure the cartridge locator guides go in the correct position**  
Confirm by slightly twisting the cartridge left and right .
- **Before tightening the nut ensure again the locators are in the correct position .**

- please note cartridges come in various colours .
- please note some taps might have a nut and some might need a skinny nose pliers to remove nut holding the cartridge .

- 8 - put the nut back on and tighten to 10Nm .
- 9 - put cap back on , put handle back on the cartridge lever , tighten screw on handle , put plug back on the handle ,  
Turn on Water supply check that mixer functions properly .

- **If not sure shut down water supply and call a plumber .**





**Important Notice.**

The following DIY instruction is only provided assist in replacing a cartridge on a mixer, basic knowledge is required . it is very important to read and follow the steps in this diagram . This diagram is a guide only we will not be responsible for incorrect installation and damaged caused by this action. It is the responsibility of the installer to follow the steps and ensure no leaking after installation.